

# Preciso

## TEJ Series

Bulkhead units TEJ50 Multi-Temp,  
TEJ100/130 and  
TEJ100/130 Multi-Temp



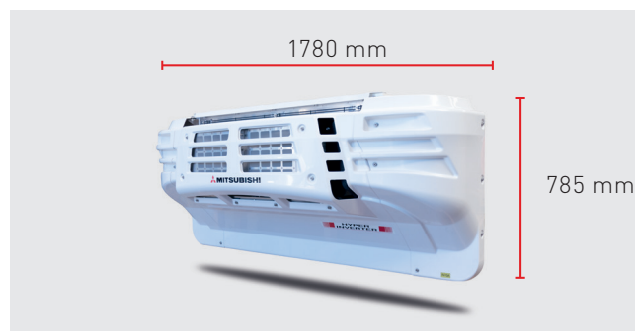
The future of refrigeration – The all-electric MITSUBISHI TEJ series

MITSUBISHI revolutionises transport refrigeration with the all-electric refrigeration system, the TEJ series, achieving top ratings regarding reliability and environmental friendliness.

The TEJ series is designed as a hermetic refrigeration compressor. It does not require any refrigerant hoses or compressor seals, which means that the usual sources of malfunction are already ruled out at the factory. The environmentally friendly refrigerant R410A is used. Thanks to the MITSUBISHI inverter control, the all-electric TEJ series is regulated so efficiently that the refrigeration system requires very little energy and thus significantly reduces emissions. 100% cooling capacity is always available regardless of the engine speed.

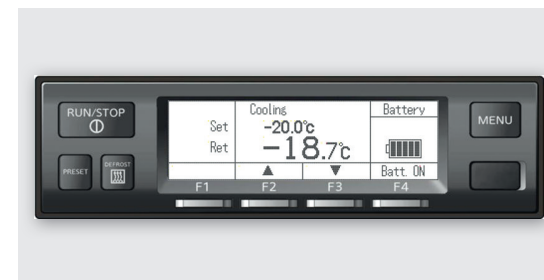
The refrigeration system in the TEJ series is the first all-electric system that uses direct current (DC) and is, therefore, well prepared for the future of electric trucks. They cover an extensive operating voltage range of 250 – 400 VDC.

The combination of these benefits gives you a highly efficient, environmentally-friendly product, aimed directly at guaranteeing the optimal security of your cargo.

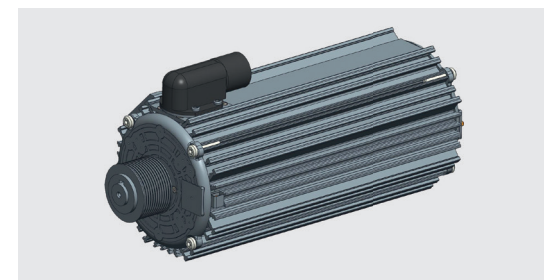


MOVE THE WORLD FORWARD

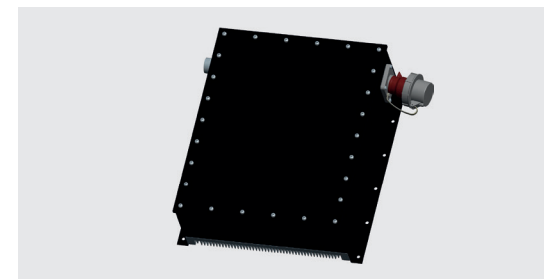
MITSUBISHI  
HEAVY  
INDUSTRIES  
GROUP



Remote control



Generator



AVR box



## Benefits:

- > All-electric
- > 5-year warranty
- > External evaporator for 100% available loading volume
- > High efficiency thanks to large heat exchanger surfaces
- > Full cab tilt angle is retained
- > TEJ50 Multi-Temp with heat pump technology; very high heating capacity
- > Very low GWP value due to more environmentally-friendly R410A refrigerant
- > Output control independent of engine speed
- > Low life cycle costs due to closed refrigeration circuit
- > Hermetic compressor
- > Very quiet operation, below 60 dB(A), PIEK compatible
- > User-friendly remote control with LCD display and USB port, multilingual
- > Timer function

Cooling capacity (ATP tested)	TEJ50 Multi-Temp	TEJ100/130	TEJ100/130 Multi-Temp
at 0 °C	4277 watt	13011 watt	14182 watt
at -20 °C	2232 watt	7689 watt	8095 watt
Heating capacity at -10 °C	4343 watt	6527 watt	6527 watt
Refrigerant	R410A	R410A	R410A
Air flow	1271 m <sup>3</sup> /h / 1208 m <sup>3</sup> /h	2741 m <sup>3</sup> /h	2741 m <sup>3</sup> /h / 1279 m <sup>3</sup> /h
Weight	166 kg**	314 kg*	344 kg**

\* Condenser unit / \*\* Condenser unit and evaporator



### Easy maintenance

- > No refrigerant hoses; hermetic
- > Highest reliability



### Options

- > Powered by self-sufficient battery system
- > Powered by generator
- > Powered by the truck's traction battery



### Compressor

- > Hermetic compressors with long service life
- > Highly efficient
- > Variable control, output-dependent
- > Wear-resistant



Evaporator

TEJEV-SV2



TES35EHP2-E

